

YEAR 2018

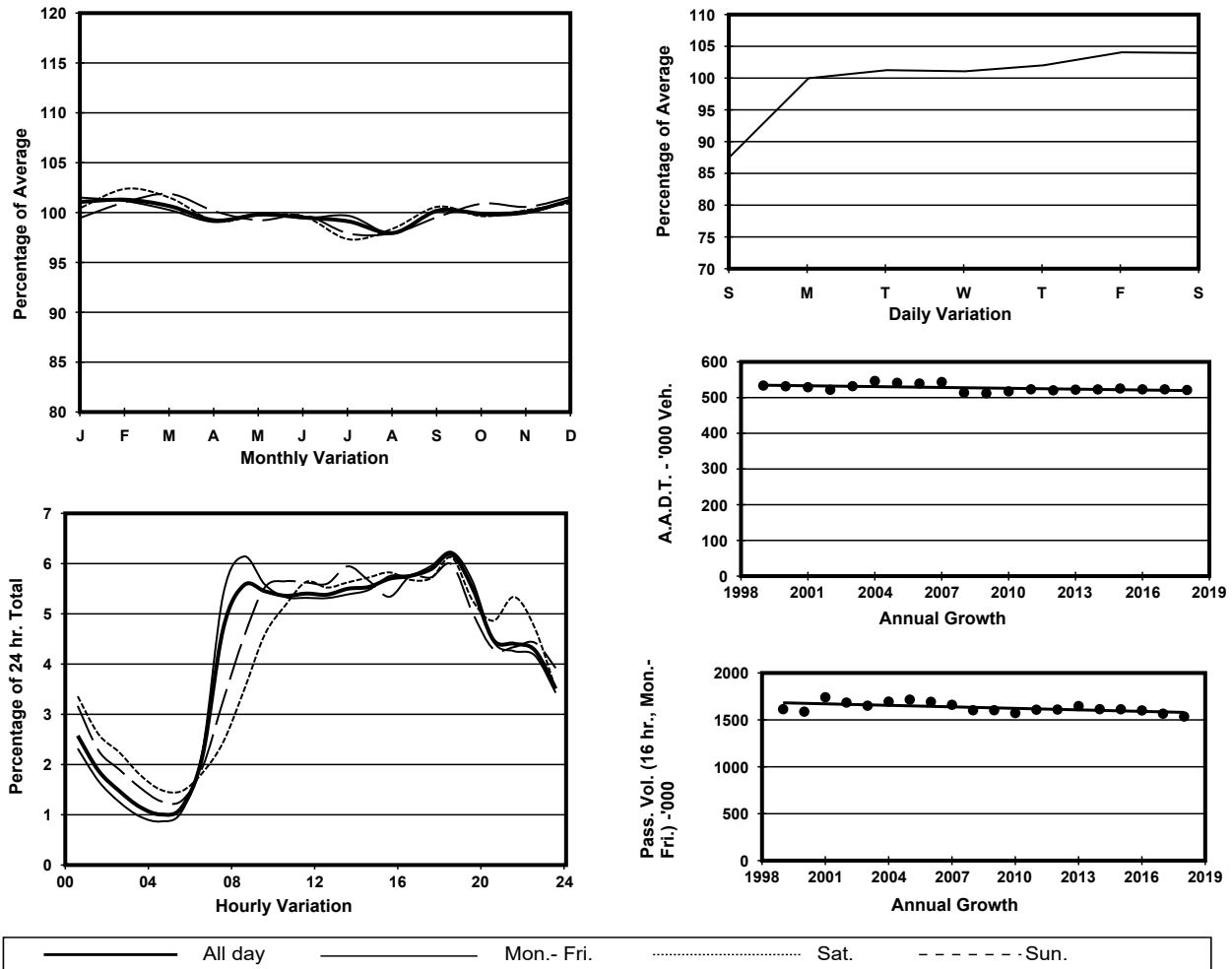
Location

Screenline A-A(Urban Railway Line)

Stations on Cordon/Screenline

3001, 3002, 4202, 4203, 4204, 4205, 4206, 4207, 4208, 4221 and 4401

1. TRAFFIC FLOW VARIATION AND GROWTH



2. TRAFFIC CHARACTERISTICS (BY DIRECTION)

Parameter	All - Day	Mon. - Fri.	Sat.	Sun.
EAST BOUND				
A.A.D.T.	269570	277110	279100	234830
R 12 / 24 - %	65.9	67.2	64	60.5
R 16 / 24 - %	85.1	86.2	82.7	81.3
AM Peak Hour	0800-0900	0800-0900	0900-1000	0900-1000
One-way flow at AM peak hour	15030	17260	14270	9870
T - % (AM)	-	10.9	-	-
PM Peak Hour	1800-1900	1800-1900	1600-1700	1800-1900
One-way flow at PM peak hour	16530	17190	16720	14440
T - % (PM)	-	7.9	-	-
Prop.of commercial vehicles - 16 hr.	-	9.4	-	-
WEST BOUND				
A.A.D.T.	251730	256350	266340	225620
R 12 / 24 - %	67	68.1	65.3	62.6
R 16 / 24 - %	85.1	86.1	82.7	82.2
AM Peak Hour	0900-1000	0800-0900	0900-1000	0900-1000
One-way flow at AM peak hour	14190	15510	15860	11250
T - % (AM)	-	7.8	-	-
PM Peak Hour	1800-1900	1800-1900	1800-1900	1800-1900
One-way flow at PM peak hour	15690	16050	16560	13740
T - % (PM)	-	6	-	-
Prop.of commercial vehicles - 16 hr.	-	8.1	-	-

3. OTHER INFORMATION AND COMMENT

4. Vehicle classification and occupancy - Monday to Friday

Time		Class of vehicle									
		Motor Cycle	Private Car	Taxi	Private LB	PLB	Goods veh.		Non Fr. Bus	Fr. Bus	
							Light	M & H		SD	DD
0700-0800	Pro	4.8	35.7	24.4	3.5	4.2	14.8	3.4	5.1	0.1	4.0
	Ocp	1.1	1.4	2.1	7.5	11.1	1.4	1.2	14.4	14.4	47.3
0800-0900	Pro	3.5	49.8	19.1	1.5	3.3	13.6	3.1	2.8	0.1	3.2
	Ocp	1.1	1.3	2.0	5.0	12.5	1.5	1.3	13.8	16.6	50.5
0900-1000	Pro	2.6	41.2	21.8	1.0	3.2	20.9	3.6	2.2	0.1	3.4
	Ocp	1.1	1.3	2.0	2.6	11.2	1.5	1.3	7.4	12.9	29.4
1000-1100	Pro	2.7	34.9	24.2	1.1	2.9	24.8	4.7	1.3	0.1	3.2
	Ocp	1.1	1.4	2.0	2.2	9.0	1.5	1.4	7.9	12.3	27.4
1100-1200	Pro	2.9	37.2	22.8	1.4	2.7	24.0	3.8	2.0	0.1	3.1
	Ocp	1.1	1.3	2.0	2.2	10.0	1.4	1.3	11.9	13.4	29.5
1200-1300	Pro	2.6	39.7	23.9	1.8	2.8	20.2	3.4	2.5	0.1	2.9
	Ocp	1.0	1.4	2.0	5.3	9.8	1.4	1.4	14.2	13.1	29.7
1300-1400	Pro	2.7	37.0	23.6	2.1	2.6	22.8	3.7	2.6	0.1	2.9
	Ocp	1.1	1.5	2.0	3.9	9.7	1.4	1.3	10.5	14.5	33.3
1400-1500	Pro	3.3	39.9	22.0	1.5	2.4	22.6	3.4	2.2	0.1	2.7
	Ocp	1.1	1.4	2.0	1.9	9.9	1.5	1.2	7.3	12.8	31.2
1500-1600	Pro	2.8	41.0	21.9	2.3	2.4	20.7	3.6	2.3	0.1	2.9
	Ocp	1.1	1.4	2.0	7.5	11.3	1.5	1.3	11.6	16.0	32.8
1600-1700	Pro	3.2	43.2	20.4	2.0	2.5	19.2	3.3	3.0	0.1	3.1
	Ocp	1.1	1.4	1.9	3.0	11.8	1.5	1.4	9.6	15.0	36.5
1700-1800	Pro	4.8	46.9	18.6	1.8	3.1	16.5	2.5	2.6	0.1	3.2
	Ocp	1.1	1.4	2.1	2.6	13.1	1.5	1.3	11.2	16.5	46.8
1800-1900 Peak Hour	Pro	5.7	52.6	19.7	0.4	3.4	11.6	1.2	2.2	0.1	3.2
	Ocp	1.1	1.4	2.1	2.6	15.0	1.4	1.3	16.8	19.7	60.2
1900-2000	Pro	3.5	56.9	21.5	0.1	3.8	7.7	0.8	2.4	0.1	3.1
	Ocp	1.1	1.4	2.0	1.4	13.1	1.4	1.4	10.5	12.8	45.9
2000-2100	Pro	3.3	48.7	29.3	0.1	4.2	7.2	1.3	2.1	0.1	3.7
	Ocp	1.1	1.4	2.0	1.5	11.2	1.5	1.4	9.3	8.4	35.7
2100-2200	Pro	3.2	47.3	31.8	0.2	4.2	7.1	0.8	1.5	0.1	3.7
	Ocp	1.2	1.5	1.9	2.1	10.8	1.4	1.3	4.4	7.3	34.1
2200-2300	Pro	3.4	47.7	33.4	0.1	4.6	5.2	0.8	1.1	0.1	3.7
	Ocp	1.1	1.4	2.0	1.4	10.5	1.4	1.3	4.8	6.0	34.8
16 hours	Pro	3.5	43.8	23.2	1.3	3.2	16.5	2.8	2.4	0.1	3.2
	Ocp	1.1	1.4	2.0	4.4	11.4	1.5	1.3	11.2	13.3	38.6

Legend

Pro. Proportion of vehicles in % (Sum may not add up to 100% due to figure rounding)*

Ocp. Average occupancy of vehicles including both driver and passengers*

M&H Medium and Heavy

***** All traffic data are collected from combined bounds except for one way traffic